

I-75 Modernization Project, Oakland County

North of 13 Mile to South Boulevard

August 12, 2020

www.Modernize75.com | (313) 518-1078



Job Number: 201437 | CS 63174
 Contractor: Walsh/Toebe Joint Venture
 For additional historical info visit:

Michigan.gov > [MDOT](#) > [I-75 Modernization Project](#)

SEGMENT ONE (Opened to traffic in 2017)
 North of Coolidge to North of South Boulevard

SEGMENT TWO (Under Construction)
 North of 13 Mile to North of Coolidge Hwy

VIDEOS



Project Corridor

Big Beaver Diverging Diamond Interchange

PHOTOS



Livernois Bridge Demolition

Lifting Pile at Big Beaver

[View photo gallery](#)

SEGMENT TWO

North of 13 Mile to North of Coolidge Hwy

Closures on I-75 at Livernois Road and Coolidge Highway this Thursday for Guardrail Repair

POSTED AUG 4 2020

Weather permitting, the right lane of I-75 northbound will be closed on Thursday, August 6th at Livernois

Construction Progress to Date

89%

PHONE CALLS (Started November 21, 2018)

128 calls asking for directions

65 calls asking about project timing

71 calls with project concerns

190 calls asking for project info

PRESS RELEASES

Michigan.gov > [Press Releases](#)

Modernize75.com > [Press Releases](#)

SOCIAL MEDIA

<https://www.facebook.com/modernize75>

<https://twitter.com/Modernize75>

facebook

Comments:

Scott S. --- Git-R-Done!

Brian M. -- You folks are making some great progress, thank you! I'll bet it helps you don't have 400,000 cars screaming by every day. 2000 of which are running late for work! :-{

Anna G. --- great pics, thank you

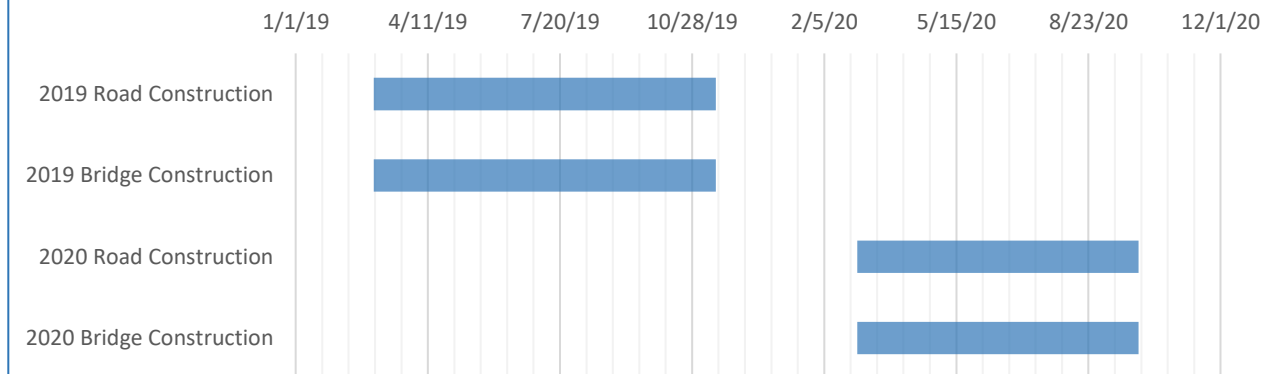
John E.--- All looks great till one of the many men and women working go home with Covid-19. Keeping in mind the average age of the construction industry is 46!!!

Ken M.--- Keep up the good work! WFH for now but looking forward to getting out on fresh pavement!

Kathleen T. ----- Looks great!

G. H. --The people involved in the construction of NB I75 segment 2 should be commended for that successful mega infrastructure replacement. Hope the mild weather continues this winter and provides continuing construction opportunities.

SCHEDULE



COSTS



Original Contract	\$223,431,500
Contract Changes	\$17,748,293
Total Current Contract	\$241,179,793
Paid to Date	\$214,676,417
Contract Bal Remaining	\$26,503,376
Percent Complete	89%